



Product Evaluation Report

PER-05001

Page 1 of 4

This Document Published By:

Progressive Engineering Inc.

Initial Listing
October, 2005

Re-Approved
April-09

58640 State Road 15
Goshen, Indiana 46528

574-533-0337
www.p-e-i.com

Listed Product

Quality Way Products, LLC Qwik-Post and Qwik-Adjust Support Columns

Listed For

Quality Way Products, LLC

4000 East Baldwin Road
Holly, MI 48442

Approved Manufacturer

Quality Way Products, LLC

4000 East Baldwin Road
Holly, MI 48442

Progressive Engineering Inc. is an accredited Testing Laboratory and Third Party Quality Control Agency. This **Product Evaluation Report** represents a product that **Pei** has a follow-up service agreement with. This **Product Evaluation Report** in no way implies warranty for this product or relieves **Quality Way Products, LLC** of their liabilities for this product. **Pei** is accredited to ISO Standard 17020 and 17025. This **PER** is an official document if it is within one year of the initial or renewal date.

Listing Details

The following described columns are Listed for vertical compression load only. They are intended for interior use in wood frame or light steel frame construction.

Product Descriptions

Qwik-Adjust Column - The Qwik-Adjust columns are a steel tube column with a fixed plate at one end and an adjustable screw unit at the other end. This column is manufactured in a standard duty (SD), heavy duty (HD) and an extreme duty (ED) model. These columns have a 4" adjustability.

Qwik-Post Column - The Qwik-Post columns are a steel tube column with a fixed plate at both ends. This column is manufactured in a standard duty model.

The standard duty columns are constructed of 11 gage ASTM A513 Grade 1010 steel tube. The heavy duty and extreme duty columns are constructed of SAE 1215 steel.

General Product Use

1. All columns are to be installed vertically plumb with either end up and on a footing capable of carrying the imposed load. Column orientation is determined by the local building official. The base of the column must be restrained to prevent lateral movement.
2. These columns are intended for vertical compression load only. They have not been evaluated for any other load direction or type.
3. Immediately after the adjustable column is positioned and adjusted, the adjustable screw unit must be made inoperable by encasement in concrete or by a method approved by the local building official.
4. The Qwik-Adjust Column's nominal size is the column at it's shortest adjustment and must not be adjusted to a longer length by more than 4"
5. The cap or base plates and their attachment to load carrying members are outside of the scope of this PER.

Product Documentation

A **Pei** test report No. 2005-791(A) - 3" Standard Duty Jack Screw Ultimate Load Test - Dated 4/13/2006 - stamped by a Professional Engineer.

A **Pei** test report No. 2005-791(B) - 3-1/2" Standard Duty Jack Screw Ultimate Load Test - Dated 4/17/2006 - stamped by a Professional Engineer.

A **Pei** test report No. 2005-427 - 4" Standard Duty Jack Screw Ultimate Load Test - Dated 4/17/2006 - stamped by a Professional Engineer.

A *Pei* test report No. 2005-246(E) - 3-1/2" Heavy Duty Jack Screw Ultimate Load Test - Dated 5/17/2006 - stamped by a Professional Engineer.

A *Pei* test report No. 2005-246(B) - 4" Heavy Duty Jack Screw Ultimate Load Test - Dated 5/17/2006 - stamped by a Professional Engineer.

A *Pei* test report No. 2006-220(A) - 3-1/2" Extreme Duty Jack Screw Ultimate Load Test - Dated 5/22/2006 - stamped by a Professional Engineer.

A *Pei* test report No. 2006-220(B) - 4" Extreme Duty Jack Screw Ultimate Load Test - Dated 5/22/2006 - stamped by a Professional Engineer.

Column Calculations - Dated 2/25/2008 - stamped by a Professional Engineer

Code Compliance

2003 International Residential Code
Section R407.2 and R407.3

2003 International Building Code
Section 104.11.1 and 104.11.2

2006 International Residential Code
Section R407.2 and R407.3

2006 International Building Code
Section 104.11.1 and 104.11.2

Compliance with the following Standard

AISC-89 - Specification for Structural Steel Buildings-Allowable Stress Design, Plastic Design

Items Requiring Verification

The following items are related to the use of Quality Way Products Qwik-Adjust/Qwik-Post columns, but not within the scope of this Listing Specification. However these items are related to the determination of code compliance.

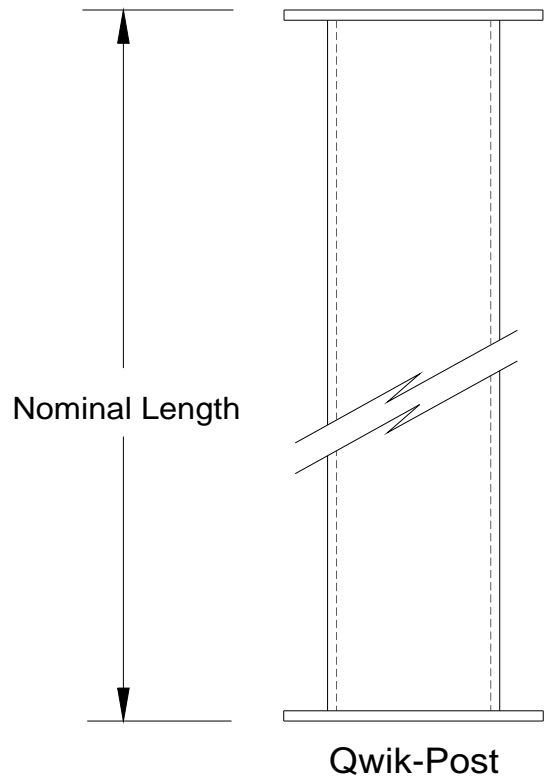
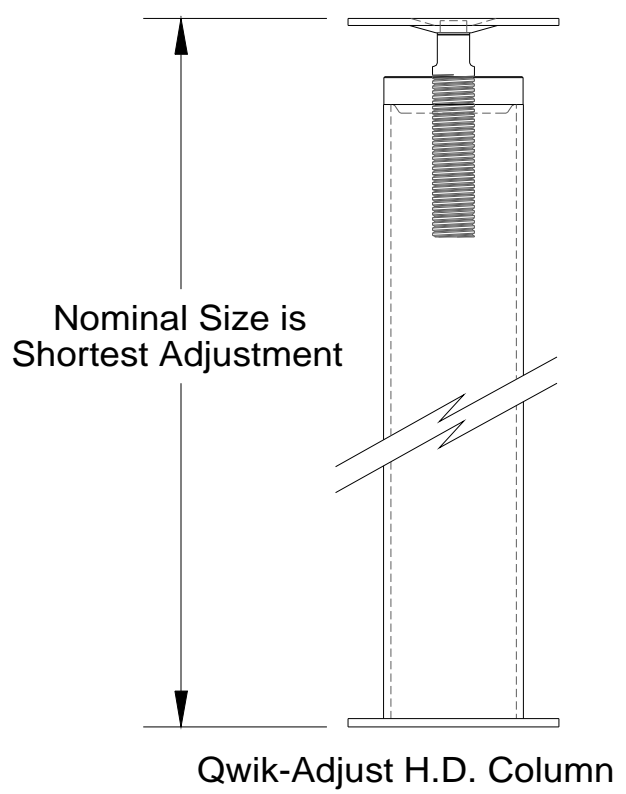
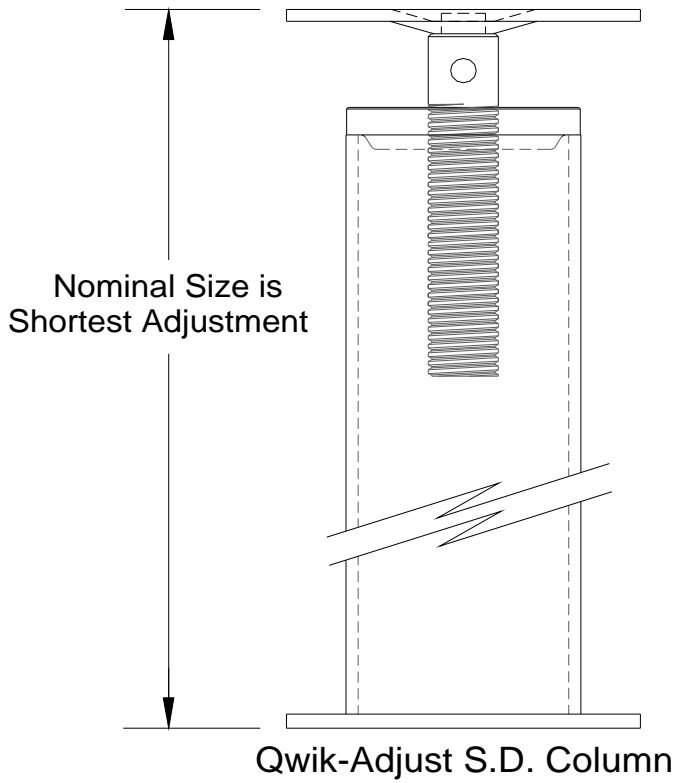
1. Design, calculations and details for the building system verifying compliance with this report.
2. Connections of the columns to the footing and supported structure.
3. Footing design and calculations for supporting the columns and the imposed load.

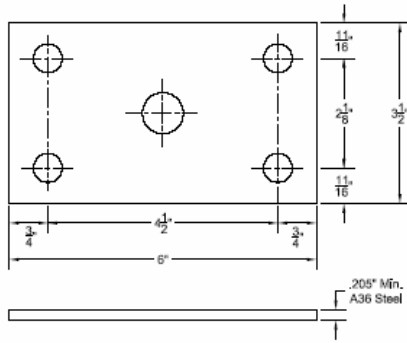
Load Calculations used to develop Table No. 1 - Dated 2/25/08 - stamped by a Professional Engineer.

Product Labeling

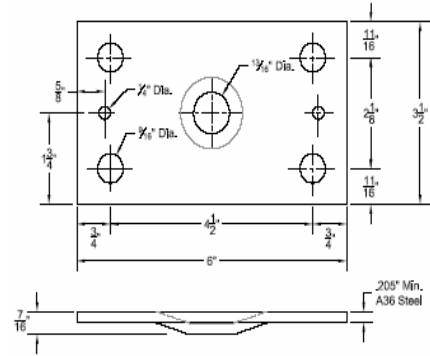
All columns manufactured by Quality Way Products, LLC that are covered by this PER must have a label attached with at least the following information:

1. Date of manufacture
2. Load Capacity of that column
3. Manufacturer's name
4. This PER number & Pei's logo
5. On adjustable column labels, the minimum and maximum column length.

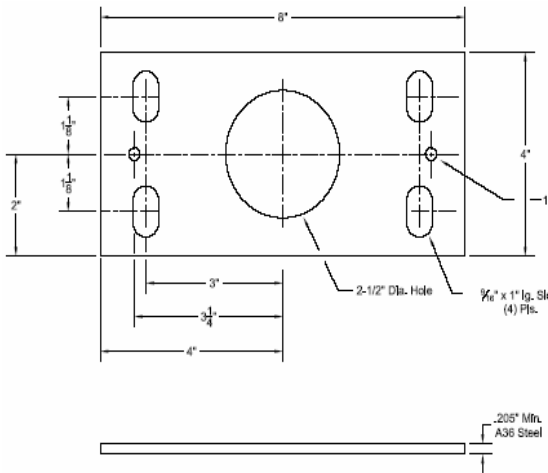




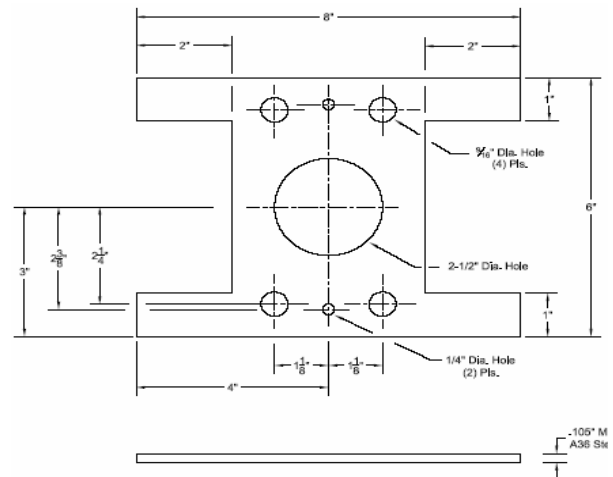
Fixed Plate
Part No. QW 35x60CP



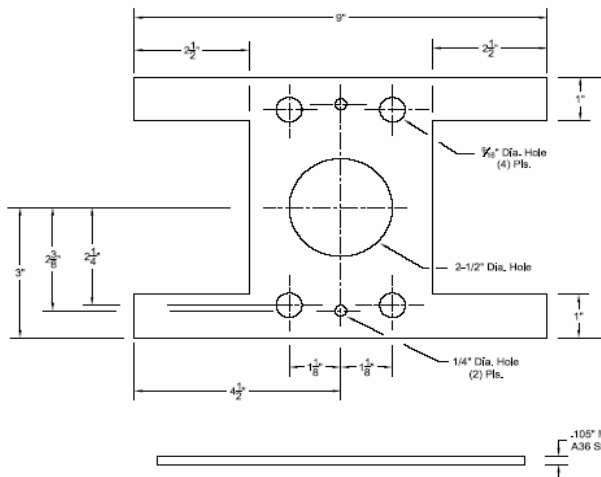
Jack Screw Plate
Part No. QW 35x60SP



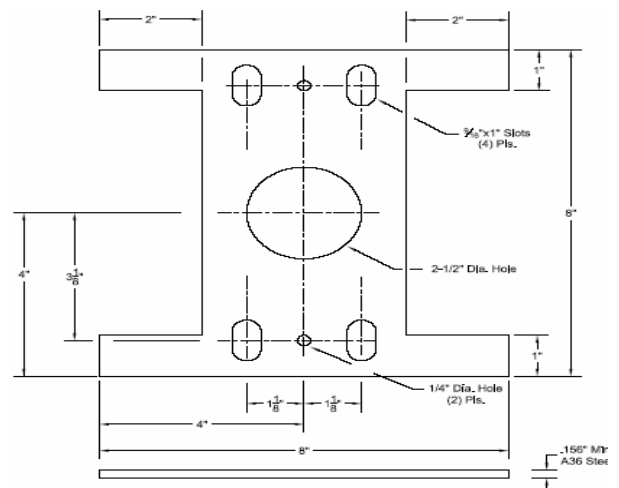
Fixed Plate
Part No. QW 40x80CP



Fixed Plate
Part No. QW 80xCC



Fixed Plate
Part No. QW 90xCC



Fixed Plate
Part No. QW 80xUC