



Product Evaluation Report

PER-08033

Page 1 of 6

This Document Published By:

Progressive Engineering Inc.

Initial Listing
January, 2009

Re-Approved

58640 State Road 15 574-533-0337
Goshen, Indiana 46528 www.p-e-i.com

Listed Products

Style 1B 8' Railing System
Style 1C 8' Railing System
Style 1D 8' Railing System
Style 1B 10' Railing System

Listed For

Royal Outdoor Products
P.O. Box 360
Milford, IN 46542

Approved Manufacturer

Royal Outdoor Products
401 S. Syracuse Street
Milford, IN 46542

Progressive Engineering Inc. is an accredited Testing Laboratory and Third Party Quality Control Agency. This **Product Evaluation Report** represents a product that Pei has a follow-up service agreement with. This **Product Evaluation Report** in no way implies warranty for this product or relieves **Royal Outdoor Products** of their liabilities for this product. Pei is accredited to ISO Standard 17020 and 17025. This **PER** is an official document if it is within one year of the initial or renewal date.

Listing Details

Styles 1B8, 1C8, 1D8 and 1B10 Railings are used for exterior guards for balconies, porches, stairs and decks. The top and bottom railings are manufactured with openings spaced under 4" to accommodate the vertical balusters.

Styles 1B8, 1C8, 1D8 and 1B10 Railings have been tested and evaluated for structural strength to meet design loads and requirements of the codes listed under Code Compliance of this PER.

Product Descriptions

Styles 1B8, 1C8, and 1D8 railings are manufactured from coextruded PVC plastic, with a UV inhibitor to prevent sun damage or color change along with impact modifiers to provide stability. The Style 1B8, 1C8 and 1D8 Railing Systems are designed for an installed height of 42" with a maximum length of 96" when measured from center-of-post to center-of-post. Style 1B8 post is a sleeve over a 4x4 timber. Styles 1C8 and 1D8 have a span rating of 92" with the use of a .136" thick x 4" x 4" PVC post. Styles 1C8 and 1D8 have galvanized steel post mounts. The galvanized steel post mount components are nominally 4" x 4" and are bolted to the deck structure through the pre-drilled holes. The steel post mount must extend a minimum of 20-1/4" above the deck surface. The top rails are reinforced with a .114" thick aluminum rail reinforcement. One crush block is used to reinforce the bottom rail.

Style 1B10 is manufactured from coextruded PVC plastic with an UV inhibitor to prevent sun damage or color change along with impact modifiers to provide stability. Style 1B10 Railing System is designed for an installed height of 42" with a maximum length of 120" when measured from center-of-center-of-post to center-of-post. Each post is a PVC sleeve over a 4x4 timber. Style 1B10 has a span rating of 116". The top rail is reinforced with a .101" thick steel reinforcement. Two crush blocks are used to reinforce the bottom rail.

General Product Usage 1B8, 1C8, 1D8 & 1B10

1. Style 1B8, 1C8, 1D8 & 1B10 Railings shall be installed in accordance with Royal Outdoor's Product Instructions and subject to the conditions of this PER. A copy of Royal Outdoor's Product Installation Instructions shall be made easily available to the installer.

2. All framing, wood posts, beams, joists, stringers and associated connections needed to support the 1B8, 1C8, 1D8 & 1B10 Railings and Post Mount System is outside of the scope of this PER. All framing shall follow applicable codes or be designed by a licensed Engineer. Stairways shall be designed and constructed in accordance with the applicable codes.

3. Style 1B8 Railing is installed and fastened to wood framing using four (4) #12 by 2-1/2 inch long stainless steel wood screws. One (1) #12 x 1-1/2" long self-drilling screw is driven through the inner face of the bracket and one (1) screw is driven through the outer face of the bracket of the top rail. These screws are driven through the guardrail and the reinforcement. No screws are driven through the bracket on the bottom rail. One 2" high crush block is fastened to the bottom rail at the center of its length. Only the fasteners and fastener configurations specified for use have been evaluated for installation of the Style 1B8 Railing System.

General Product Usage 1B8, 1C8, 1D8 & 1B10

4. Style 1C8 and 1D8 Railings are to be installed to framing with (2) steel post mounts. The steel post mounts are bolted to the deck section using 5/16" x 2-1/4" long carriage bolts. The routed post sleeves are then slid over the steel post mounts. One (1) #12 x 1-1/2" stainless steel screw is inserted in the hole found in the post plate and into the guardrail. The screw does not contact the reinforcement. For Style 1C8 one 2" high crush block is fastened to the bottom rail at the center of its length. For Style 1D8 the top and bottom rail have an aluminum reinforcement and no crush block. Only the fasteners and fastener configurations specified for use have been evaluated for installation of Styles 1C8 & 1D8 Railing Systems.

5. Style 1B10 Railing is to be installed and fastened to wood framing using four #12 by 2-1/2 inch long stainless steel screws. Two (2) #12 x 1-1/2" long self-drilling screws are to be driven through the inner face of the bracket and one (1) screw is driven through the outer face into the bracket of the top rail. The screws are driven through the guardrail and steel reinforcement. The bottom rail does not get fastened to the brackets. Two (2) 2" high crush blocks are fastened to the bottom rail to provide three (3) equidistant spaces between the posts. Only the fasteners and fastener configurations specified for use have been evaluated for installation of the Style 1B10 Railing system.

Test Documentation

- Test Report FH-1448 - Per ASTM E84 Surface Burning Characteristics - Dated 2/13/2004
- End Use Adjustment Factor Using PEI Test Report No.'s 2003-565 (D), 2003-565 (E) and 2003-565 (F)
- PEI Test Report No. 2007-0755 - ASTM D638 Tensile Test on Xenon Arc Exposed Plastic- Dated 6/30/2007
- PEI Test Report No. 2008-0837 (D) - ASTM D7032 Guardrail Test on Style 1B8 Railing System with a .114" Thick Aluminum Rail Reinforcement - Dated 7/22/2008
- PEI Test Report No. 2008-0837 (E) - ASTM D7032 Guardrail Test on Style 1C8 Railing System with a .114" Thick Aluminum Rail Reinforcement - Dated 9/04/2008
- PEI Test Report No. 2008-0837 (F) - ASTM D7032 Guardrail Test on Style 1D8 Railing System with a .114" Thick Aluminum Rail Reinforcement - Dated 9/12/2008
- PEI Test Report No. 2008-0837 (G) - ASTM D7032 Guardrail Test on Style 1B10 Railing System with a .101" Thick Steel Rail Reinforcement - Dated 6/12/2008
- PEI Test Report No. 2008-0837 (H) - ASTM D7032 Guardrail Post Mount Tests - Dated 9/15/2008
- PEI Test Report No. 2008-0837 (I) - Guardrail Corner Connection Test - Dated 10/09/2008

Tested to

- ASTM E84-03 - Standard Test Method for Surface Burning Characteristics of Building Materials**
- ASTM D638-03 - Standard Test Method for Tensile Properties of Plastic**
- ASTM D7032-04 - Standard Specification for Establishing Performance Ratings for Wood Plastic Composite Deck Boards and Guardrail Systems (Guards for Handrails)**
- ASTM G155-04 - Standard Practice for Operating Xenon Arc Light Apparatus for Exposure of Non-Metallic Materials.**
- ASTM E8 - Standard Test Methods for Tension Testing of Metallic Materials**

Quality Assurance Documentation

- Deck and Railing Instructions by Royal Outdoor Products
- A Quality Control Manual for Railing Manufacturing - Dated 10/31/2008
- A follow-up Listing & Inspection agreement between Pei and Royal Outdoor Products
- A MSDS sheet for PVC Compounds dated 2/10/2005
- A Steel Reinforcement Material Certification dated 7/30/2007

Code Compliance for 1C8 & 1D8 Railing Systems

2003 International Residential Code Section R312.1	2006 International Residential Code Section R312.1
--	--

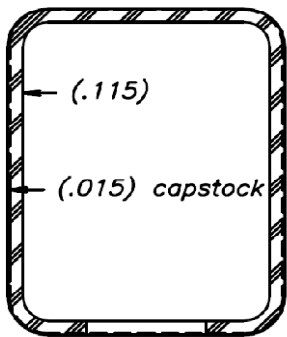
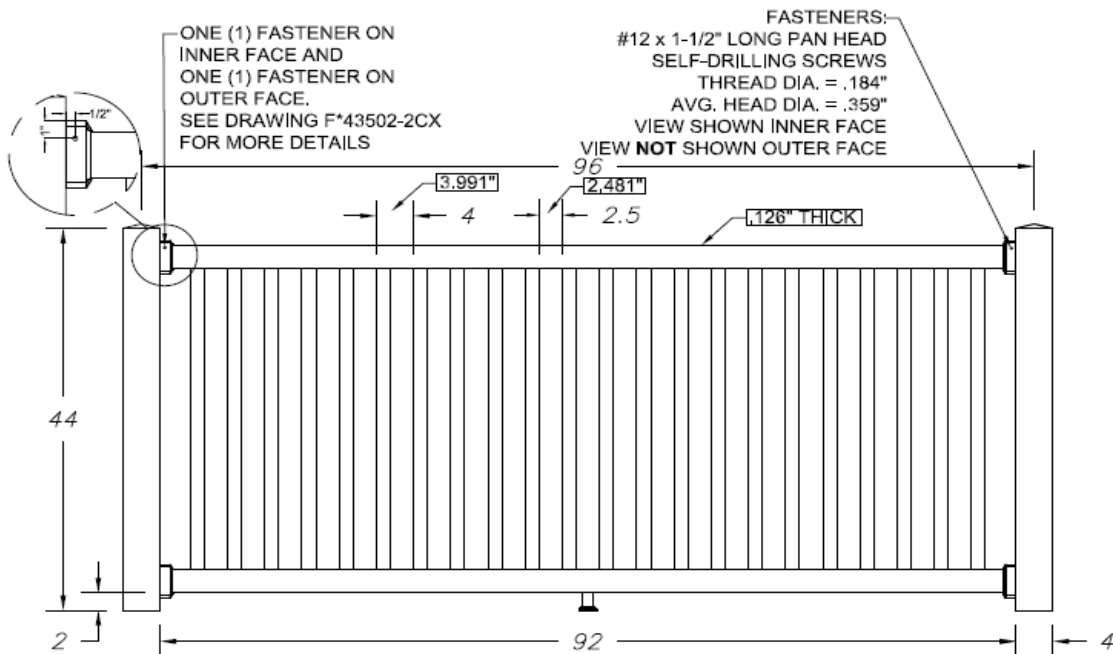
Code Compliance for 1B8 & 1B10 Railing Systems

2003 International Residential Code Section R312.1	2006 International Residential Code Section R312.1
2003 International Building Code Section 1607.7.1	2006 International Building Code Section 1607.7.1

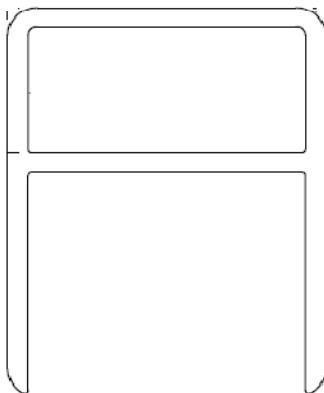
Product Labeling

- Style 1B8, 1C8, 1D8 & 1B10 Railing Systems must be labeled with at least the following information:
1. The Style 1B8, 1C8, 1D8 and 1B10 Railing name
 2. Manufacturing Date Code
 3. Manufacturer's name, Logo or website
 4. This PER number & Pei's name or Logo

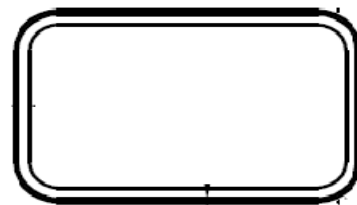
1B8 Railing System



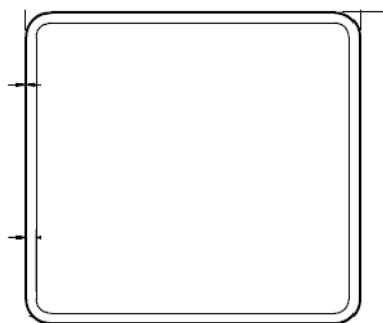
2.10" x 2.661" Rail



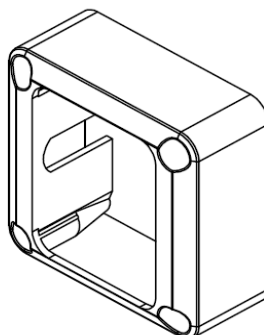
Aluminum Reinforcement



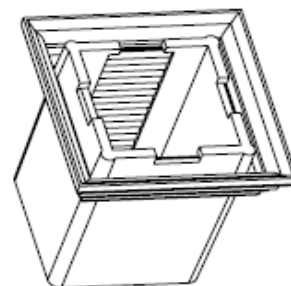
.890 x 1.5 Picket



4" Square Post

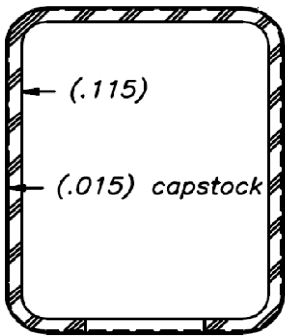
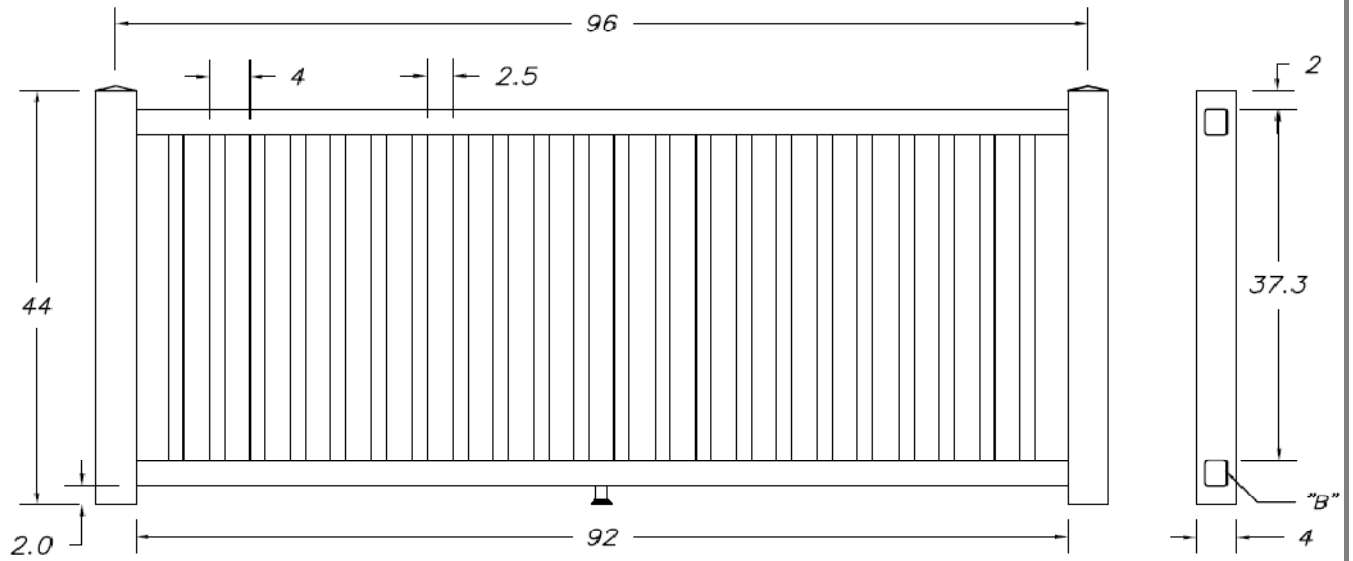


Wall Mount

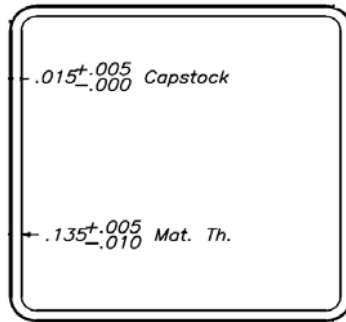


Crush Blocks

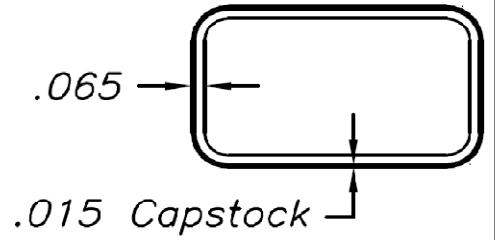
1C8 Railing System



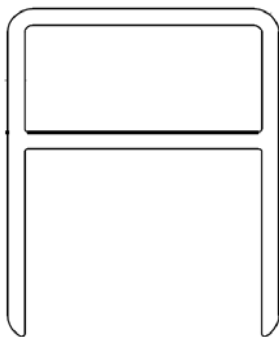
2.10" x 2.661" Rail



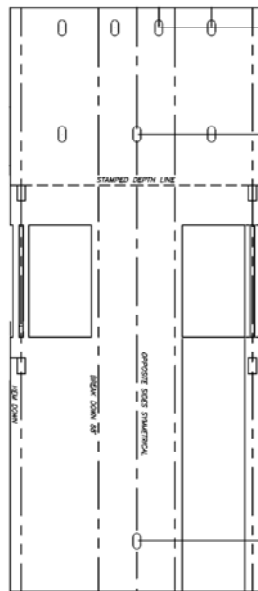
4" Routed Square Post



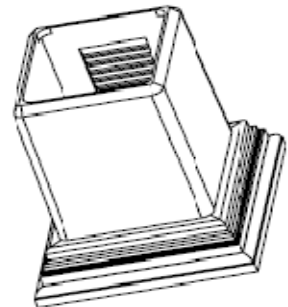
.890" x 1.5 Picket



Aluminum Reinforcement

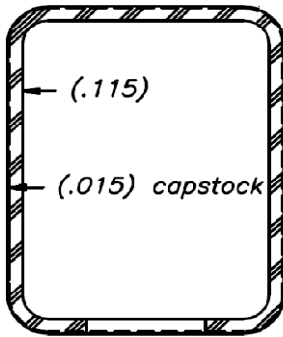
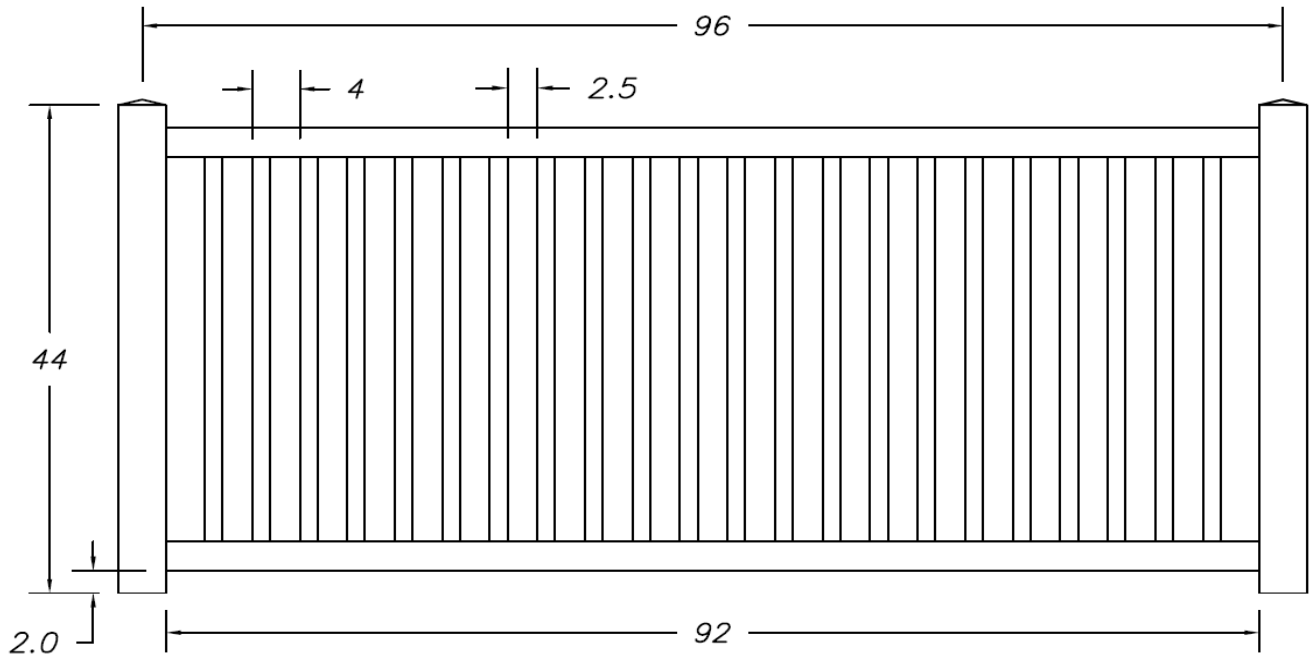


4" Post Mount

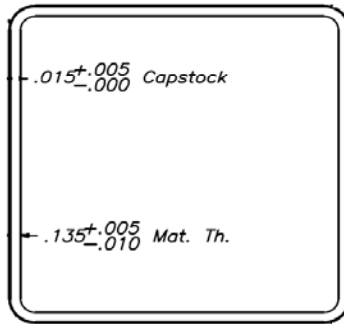


Crush Block

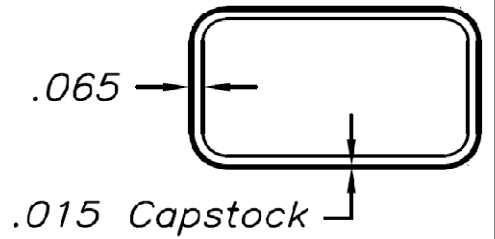
1D8 Railing System



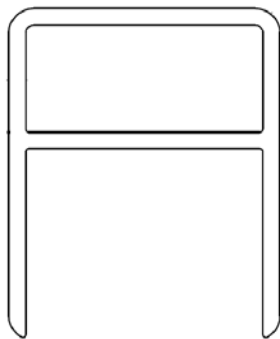
2.10" x 2.661" Rail



4" Routed Square Post

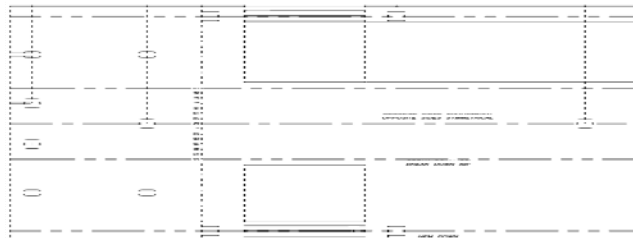


.890" x 1.5 Picket

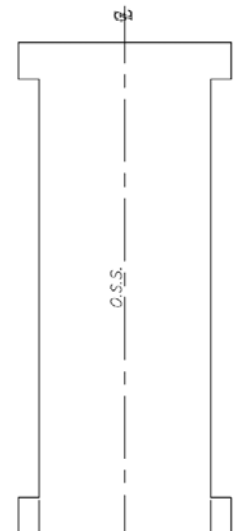


Aluminum Reinforcement

(Top & Bottom Rail)

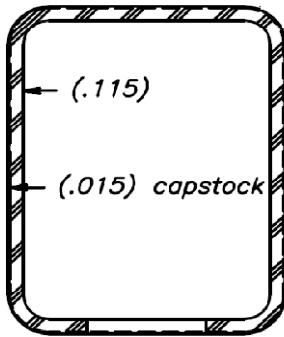
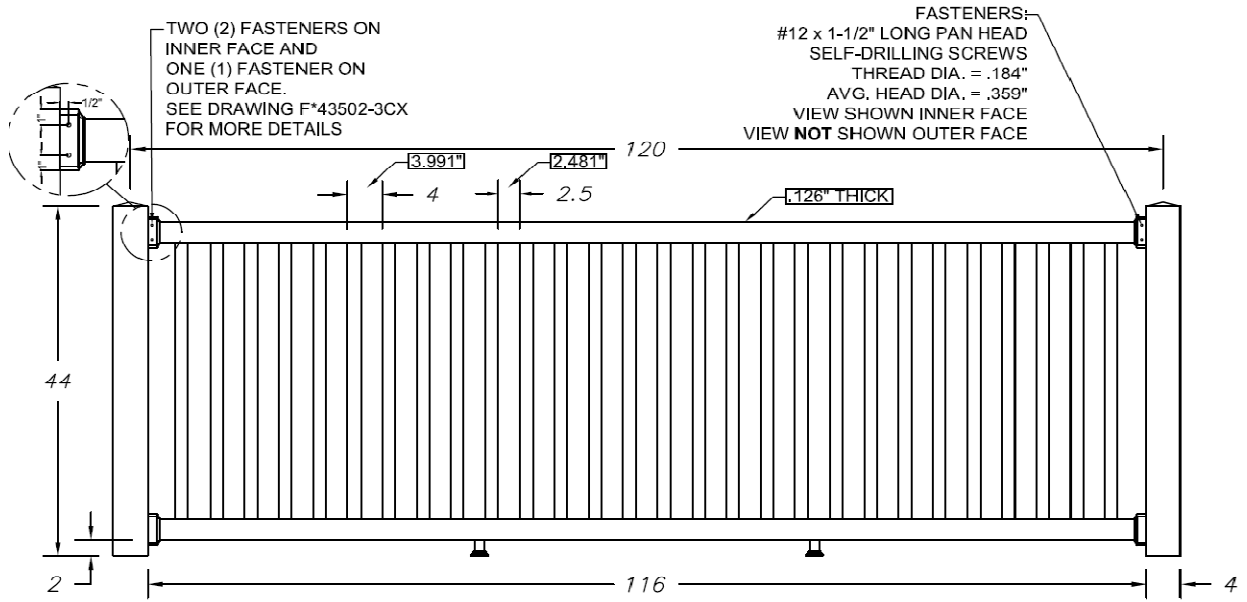


4" Post Mount

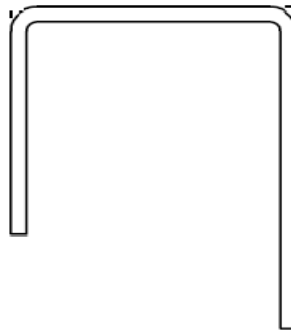


4" Post Mount Plate

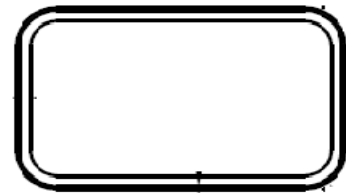
1B10 Railing System



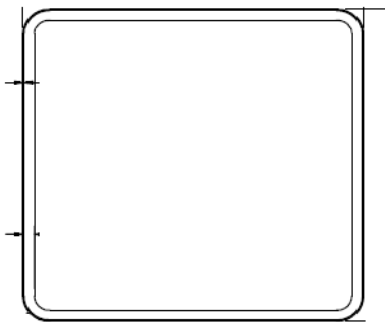
2.10" x 2.661" Rail



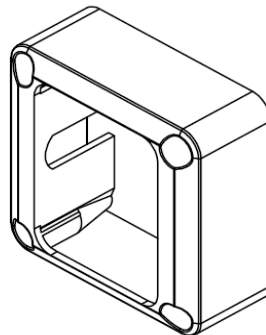
.101" Steel Reinforcement
(Inner Face Only)



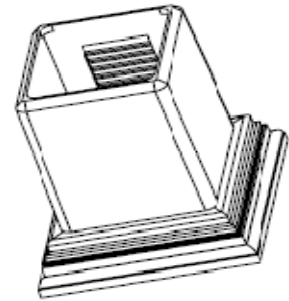
.890 x 1.5 Picket



4" Square Post



Wall Mount



Foot Blocks